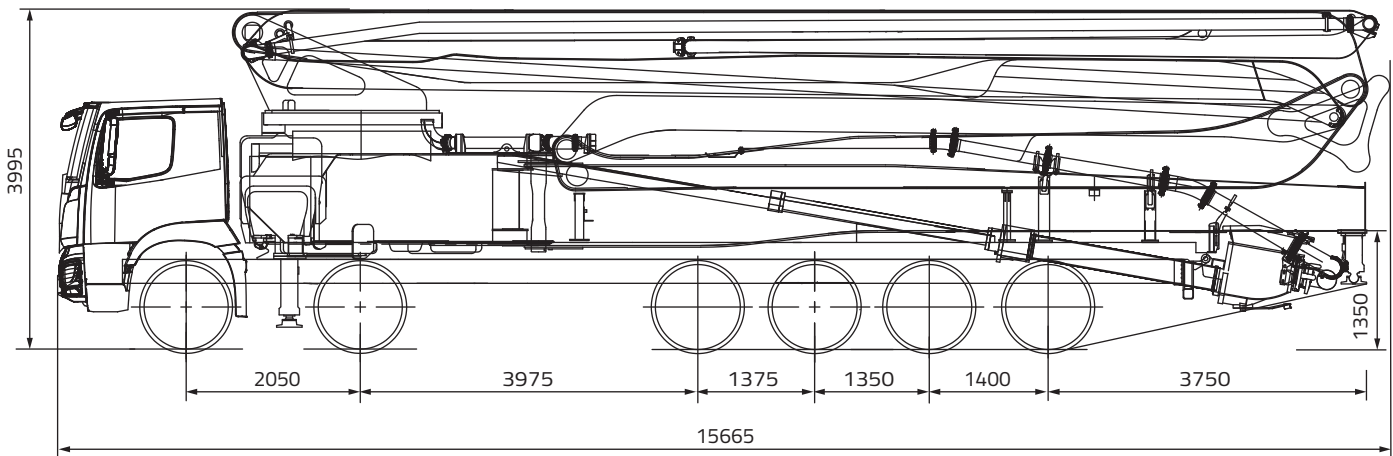


# TRUCK MOUNTED CONCRETE PUMP 70X-6RZ



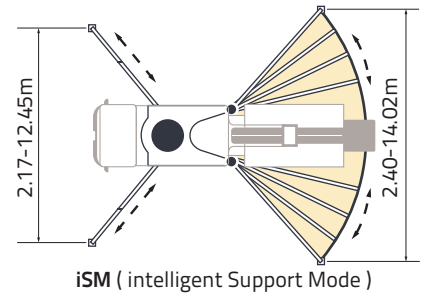
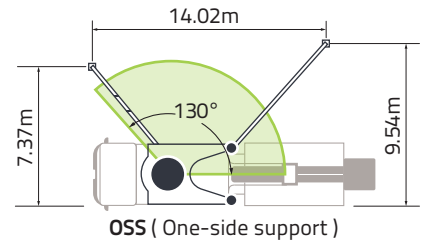
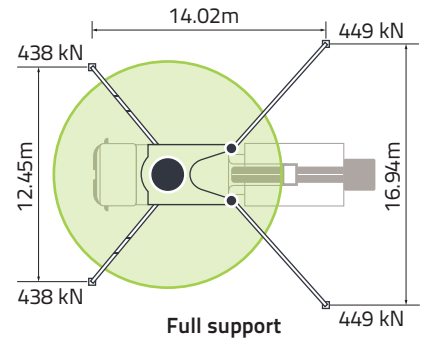
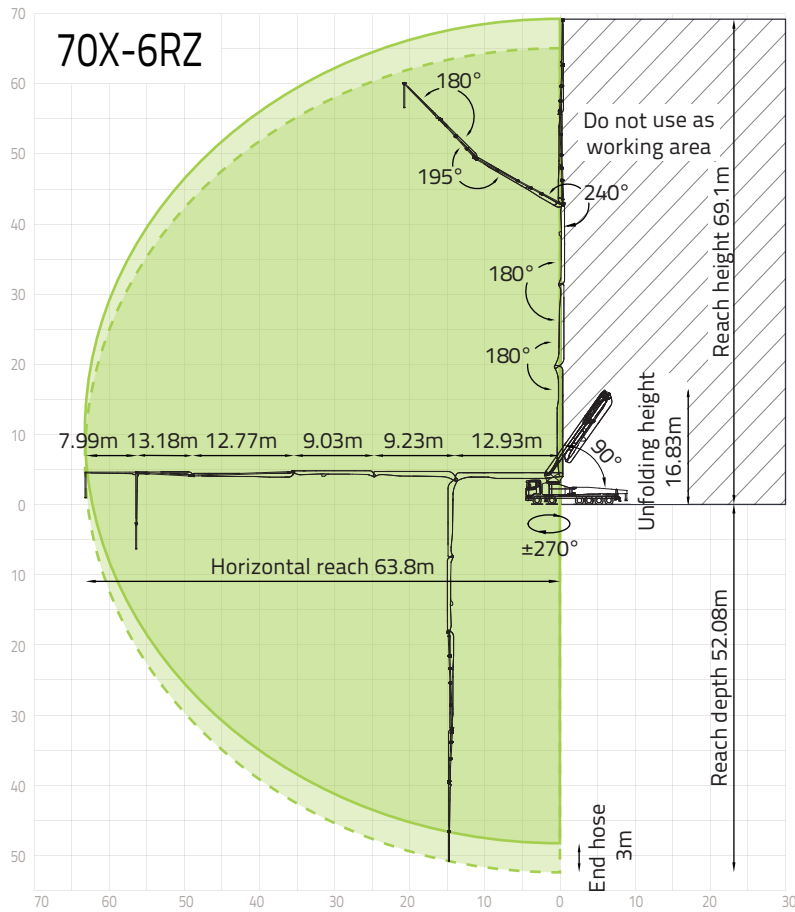
Note: Standard version. Dimensions and weights depend on truck, pump model and equipment.  
Dimensions in mm. Example based on Mercedes-Benz Arocs 6553.  
For illustration only. Actual products may vary.

## Technical Specifications

| BOOM                           | UNIT              |             |
|--------------------------------|-------------------|-------------|
| Reach height                   | m                 | 69.1        |
| Horizontal reach ( gross/net ) | m                 | 63.8 / 60.3 |
| Reach depth                    | m                 | 52.08       |
| Unfolding height               | m                 | 16.83       |
| Sections                       | /                 | 6           |
| Folding system                 | /                 | RZ          |
| End hose length                | m                 | 3           |
| Delivery line                  | mm                | DN 125      |
| PUMP                           |                   |             |
| Max. output                    | m <sup>3</sup> /h | 180         |
| Max. pressure                  | bar               | 113         |
| Delivery cylinder              | mm                | Φ 260       |
| Stroke                         | mm                | 2100        |

\*All data are maximum theoretical values.

# Reach information diagram, support



## Configurations ( Optional★ )

### Pumping System

- APC ( Accurate Pumping Control )
- CPC ( Condition-adaptive Pumping Control )
- ECO ( Eco. Pumping )
- Synchronized dual-concrete piston retraction
- Pumping concrete status identification and prompt★
- MPC ( Multi-mode Pumping Control )★

### Hopper

- Streamline hopper
- Aluminium alloy hopper cover
- Bar-type grille
- Hopper vibrator
- Cleaning ball stopper
- Chrome-plated concrete cylinder
- Wear-resistant S pipe
- Carbide wear plate
- Labour-saving device for hopper cover
- Quick-release concrete piston
- Automatic forward /reverse agitator rotation
- S-valve swinging speed control

### Cleaning

- Water tank, 550L
- Water pump, 70L/min, 13bar
- Water pump, 15L/min, 200bar
- Hose reel for low pressure water pump, 10m
- Quick-connect water inlet
- Water Tank Heater

### Support

- SSM ( Standard Support Mode ) ( Full Support/OSS/FS/LF/RF )
- iSM ( intelligent Support Mode )

### Placing Boom

- OBF ( One-joystick Boom Fold /Unfold )
- OBP ( One-joystick Boom Place )
- ABC ( Active Boom Control )
- ARC ( Active Boom Rotation Control )

### Delivery Line

- Self-locking end hose clamp
- Snap pipe coupling
- End hose, 3m, DN 125
- Double-layer pipes

### Lighting

- Boom tip light, LED
- Boom light, LED
- Hopper light, LED
- Rear hopper light, LED
- Baseframe access light, LED
- Support area spotlight, LED
- Support indicator light, LED
- Tipping warning light, LED
- Pumping warning light, LED
- Slewing warning light, LED
- Stop light, LED
- Height-marker lamp, LED

Side-marker lamp, LED

### Safety

- Reversing camera system
- 360° surround camera system
- OGS ( Outriggers Guidance System )
- PAW ( Placing Area Warning ) + GSW ( Ground Support Warning )
- EPC ( Emergency Pumping Control )
- Emergency hydraulic power interface for boom and outrigger
- End hose squeeze valve, operable by remote control

### Digital Management

ZOOMLINK APP

### Operation and Maintenance

- Hose rack on outrigger
- Diesel tank in rear outrigger
- Two separate hydraulic oil tanks
- Built-in filter element
- Central grease lubrication system
- Mushroom button for horn
- Dual radio remote controls
- Remote engine off
- Remote engine start
- OTA ( Over-the-Air Update )
- Self-diagnosis and monitoring

ZOOMLION Heavy Industry Science & Technology Co.,Ltd.

Add: No.677, Lugu Road, Zoomlion Industry Park, Changsha, Hunan, China, 410205

Copyright © ZOOMLION 2024. All rights reserved. No part of the materials provided may be reproduced or copied in any form, or used for any purpose without prior permission from ZOOMLION.

en.zoomlion.com

