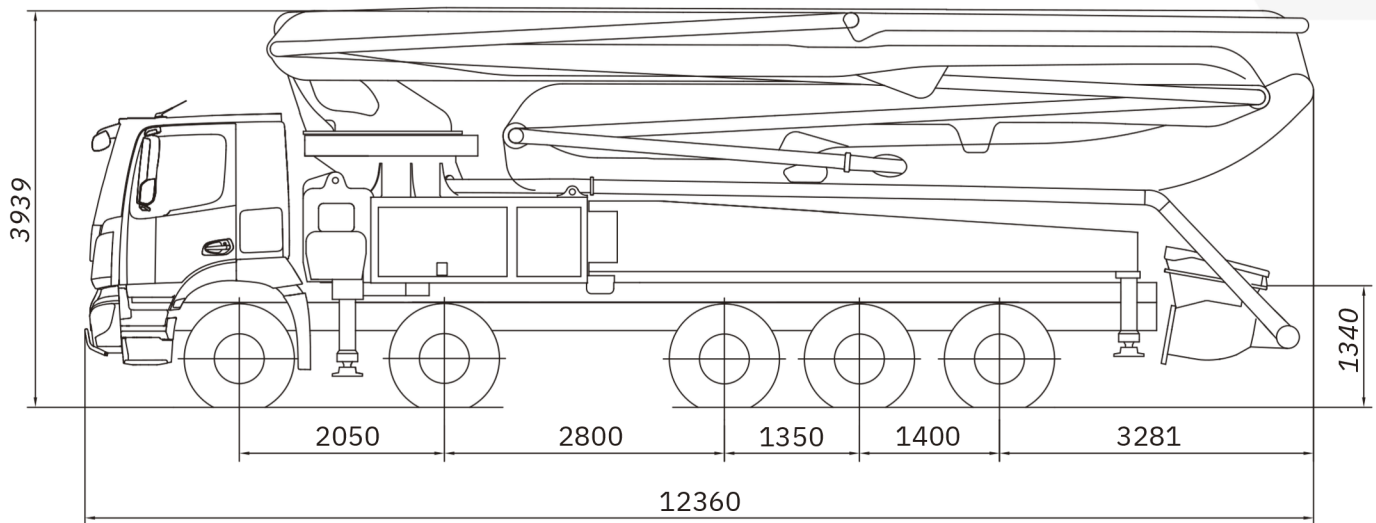




# TRUCK MOUNTED CONCRETE PUMP 50X-6RZ



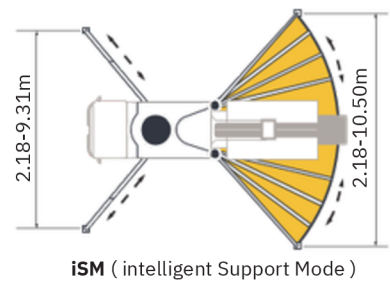
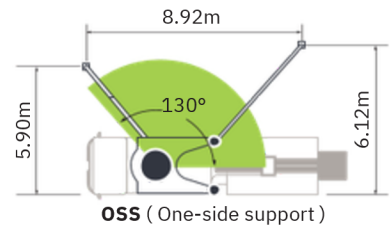
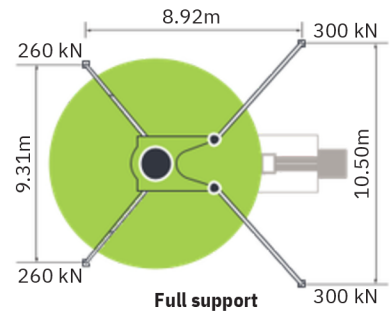
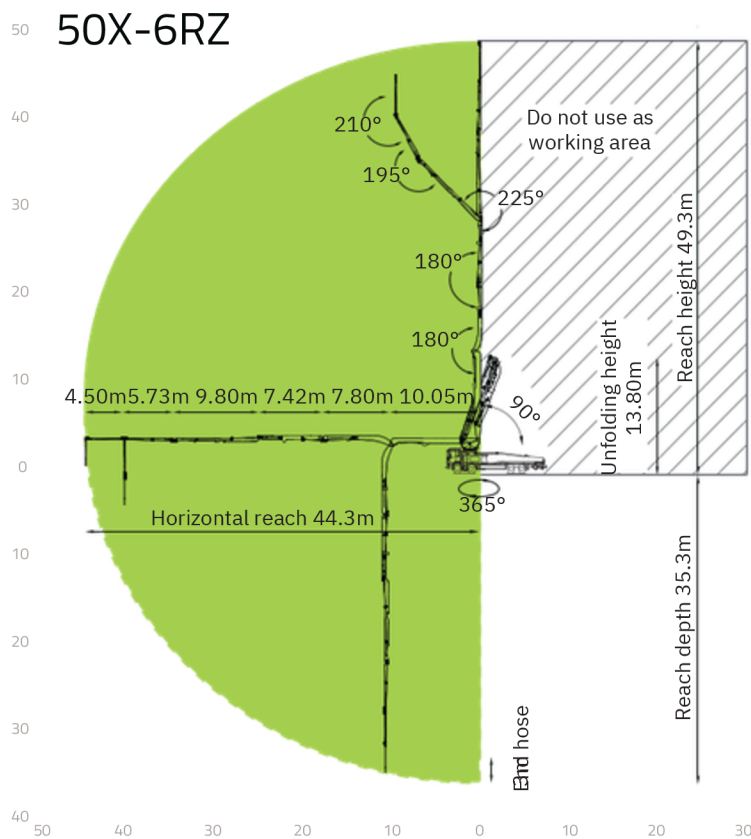
Note: Standard version. Dimensions and weights depend on truck, pump model and equipment.  
Dimensions in mm. Example based on Mercedes-Benz Arocs 55151.  
For illustration only. Actual products may vary.

## Technical Specifications

BOOM	UNIT	
Reach height	m	49.3
Horizontal reach ( gross/net )	m	44.3 / 39.62
Reach depth	m	35.3
Unfolding height	m	13.8
Sections	/	6
Folding system	/	RZ
End hose length	m	3
Delivery line	mm	DN 125
PUMP		
Max. output	m <sup>3</sup> /h	170
Max. pressure	bar	85
Delivery cylinder	mm	Φ260
Stroke	mm	2100

\*All data are maximum theoretical values.

# Reach information diagram, support



## Configurations ( Optional★ )

### Pumping System

- CPC ( Condition-adaptive Pumping Control )
- ECO ( Eco. Pumping )
- Pumping concrete status identification and prompt★
- MPC ( Multi-mode Pumping Control )★

### Hopper

- Streamline hopper
- Aluminium alloy hopper cover
- Bar-type grille
- Hopper vibrator
- Cleaning ball stopper
- Chrome-plated concrete cylinder
- Wear-resistant S pipe
- Carbide wear plate
- Labour-saving device for hopper cover
- Quick-release concrete piston
- Automatic forward/reverse agitator rotation

### Cleaning

- Water tank, 700L
- Water pump, 70L/min, 15bar
- Water pump, 15L/min, 200bar
- Hose reel for high pressure water pump, 20m
- Quick-connect water inlet

### Support

- SSM ( Standard Support Mode ) ( Full Support/OSS/FS/LF/RF )
- iSM ( intelligent Support Mode )

### Placing Boom

- OBF ( One-joystick Boom Fold/Unfold )
- OBP ( One-joystick Boom Place )
- ABC ( Active Boom Control )
- ARC ( Active Boom Rotation Control )

### Delivery Line

- Self-locking end hose clamp
- Snap pipe coupling
- End hose, 3m, DN 125
- Double-layer pipes

### Lighting

- Boom tip light, LED
- Hopper light, LED
- Rear hopper light, LED
- Baseframe access light, LED
- Support area spotlight, LED
- Support indicator light, LED
- Tipping warning light, LED
- Pumping warning light, LED

### Stop light, LED

- Height-marker lamp, LED
- Side-marker lamp, LED

### Safety

- Reversing camera system
- 360° surround camera system
- OGS ( Outriggers Guidance System )
- PAW ( Placing Area Warning )+ GSW ( Ground Support Warning )
- EPC ( Emergency Pumping Control )
- Emergency hydraulic power interface for boom and outrigger
- End hose squeeze valve, operable by remote control
- Hand rail

### Digital Management

- ZOOMLINK APP

### Operation and Maintenance

- Hose rack on outrigger
- Diesel tank in rear outrigger
- Two separate hydraulic oil tanks
- Built-in filter element
- Central grease lubrication system
- Mushroom button for horn
- Self-diagnosis and monitoring

## REMMEL AG

Registered Office  
Im Zollhafen 24, 50678 Köln

Branches  
Moselbahnstraße 2, 54470 Berncastel-Kues

CEO: Thorsten Remmel  
Phone: +49 172 6990282  
E-Mail: info@remmel-ag  
Homepage: www.remmel-ag.com  
UST-idNr.: DE328405047  
Handelsregister: Amtsgericht Köln - HRB 100861



Copyright © REMMEL AG 2026